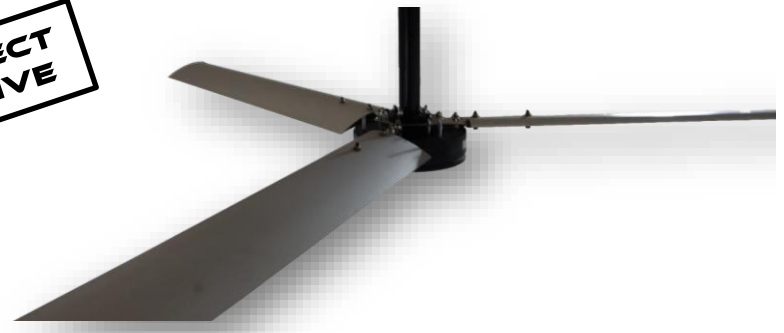


# HPF 300 SERIES HVLS FANS

**DIRECT  
DRIVE**



**BUDGET FRIENDLY, POWERFUL, & EFFICIENT FANS FOR  
COMMERCIAL & LIGHT INDUSTRIAL SPACES**

**AIRFOILS** - THREE ANODIZED ALUMINUM AIRFOILS

**WINGLETS** - BLACK AIRFOIL TIP COVERS PROVIDE A FINISHED LOOK AT THE END OF THE AIRFOILS

**DIRECT DRIVE MOTOR** - PURPOSE BUILT DIRECT DRIVE MOTOR FOR QUIET AND RELIABLE OPERATION, UP TO 50% MORE EFFICIENT THAN SIMILAR FANS THAT USE A GERMOTOR, ZERO MAINTENANCE

**HUB ASSEMBLY** - INTEGRATED INTO THE MOTOR DESIGN FOR A PERFECTLY BALANCED ASSEMBLY

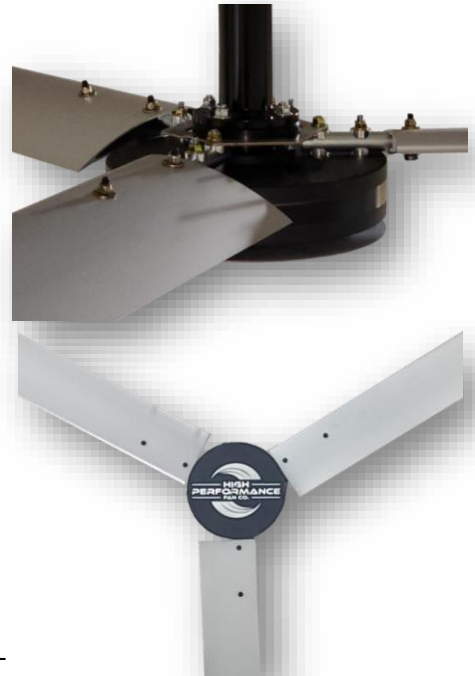
**CONTROLLER** - CEILING MOUNTED VFD; WALL MOUNTED ROTARY SWITCH OR DIGITAL KEYPAD FOR FLOOR LEVEL, VARIABLE SPEED CONTROL, REVERSIBLE

**MOUNTING** - UPPER MOUNT WITH 1 FT. EXTENSION STANDARD, OPTIONAL MOUNT KITS FOR BAR JOISTS, PURLINS, I-BEAMS, WOOD FRAMES, AND SOLID BEAMS

**SAFETY FEATURES** - STRUT SUPPORTS, SAFETY CABLES, GRADE 8 BOLTS, OPTIONAL GUY WIRE KIT AND FIRE ALARM RELAY AVAILABLE

**COLORS** - STANDARD COLORS FOR HPF 300 SERIES HVLS FANS ARE SILVER AND BLACK; OTHER COLORS AVAILABLE UPON REQUEST

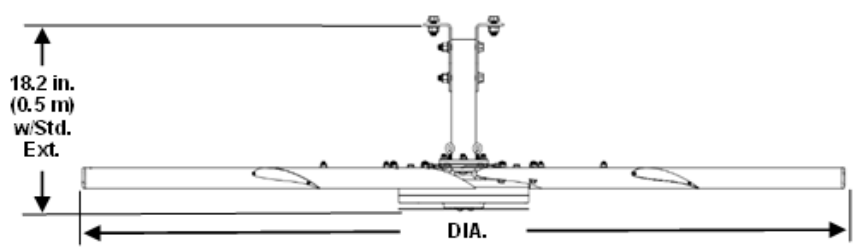
**WARRANTY** - LIFETIME MECHANICAL, 10-YEAR POWERTRAIN, & 3-YEAR ELECTRICAL



## TECHNICAL SPECIFICATIONS

FAN DIAMETER	6 Ft. (1.8 m)	8 Ft. (2.4 m)	10 Ft. (3 m)	12 Ft. (3.6 m)	14 Ft. (4.2 m)	16 Ft. (4.8 m)	18 Ft. (5.4 m)	20 Ft. (6 m)
WEIGHT*	70 lb (31.8 kg)	76 lb (34.5 kg)	82 lb (37.2 kg)	88 lb (39.9 kg)	99 lb (44.9 kg)	115 lb (52.2 kg)	121 lb (54.9 kg)	127 lb (57.6 kg)
MAXIMUM SPEED	200 RPM	180 RPM	135 RPM	100 RPM	90 RPM	85 RPM	73 PM	63 RPM
MOTOR HORSEPOWER	0.5 HP (0.37 kW)				0.75 HP (0.56 kW)	1 HP (0.75 kW)		
MAXIMUM POWER CONSUMPTION	147 Watts	312 Watts	455 Watts	479 Watts	435 Watts	445 Watts	485 Watts	495 Watts
AIRFOIL CLEARANCES	2 Ft. (0.6 m) on sides 2 Ft. (0.6 m) below ceiling				3 Ft. (0.9 m) on sides 3 Ft. (0.9 m) below ceiling		3 Ft. (0.9 m) on sides 4 Ft. (1.2 m) below ceiling	
COVERAGE AREA**	3 to 5 Times Diameter							
INPUT POWER AND REQUIRED BREAKER	110-125 VAC, 1 Ph., 50/60 Hz., 10 A 200-240 VAC, 1 Ph., 50/60 Hz., 10 A							

\* Weight includes standard upper mount and 1 ft. extension tube    \*\* Dependent upon obstructions within the flow path



## FAN CONTROLS



### ROTARY SWITCH

THE SIMPLEST AND MOST ECONOMICAL CONTROL OPTION; PROVIDES USERS WITH THE ABILITY TO TURN THEIR FAN ON/OFF, REVERSE THE FAN, AND VARY THE FAN SPEED INFINITELY, A VERY RELIABLE CONTROL OPTION, MOUNTS TO ANY 2-GANG OUTLET BOX

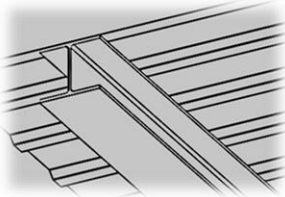


### DIGITAL KEYPAD CONTROL

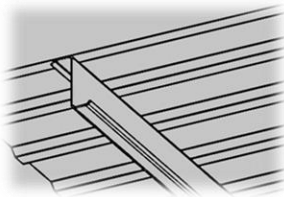
CONTROL AN INDIVIDUAL FAN USING THE DIGITAL KEYPAD CONTROL, ACCESS VFD PARAMETERS AND TROUBLESHOOT REMOTELY FROM GROUND LEVEL, A RELIABLE CONTROL OPTION WITH A OUTLET BOX/WALL MOUNTING PLATE

## MOUNTING OPTIONS

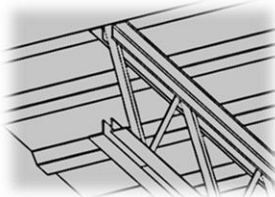
### I-BEAM



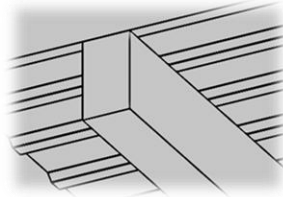
### PURLIN



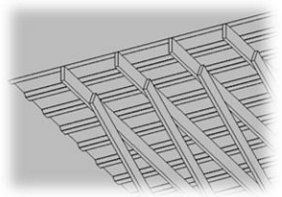
### BAR JOIST



### SOLID BEAM



### WOOD FRAME



## ORDER GUIDE

EXAMPLE: **HPF3102205300**

HPF	Fan Series	Fan Diameter	Line Voltage	Controller	Color	Mount Kit	Mounting Extension	Guy Wire Kit	Fire Alarm Relay
	3 - 300 Series 6 - 600 Series	06 - 6 Ft. Dia. 08 - 8 Ft. Dia. 10 - 10 Ft. Dia. 12 - 12 Ft. Dia. 14 - 14 Ft. Dia. 16 - 16 Ft. Dia. 18 - 18 Ft. Dia. 20 - 20 Ft. Dia.	1 - 110-120 VAC, 1 Phase 2 - 208-240 VAC, 1 Phase	0 - No Control (Multi-Fan Option) 1 - Rotary Switch w/50 Ft. Cable 2 - Rotary Switch w/75 Ft. Cable 3 - Rotary Switch w/100 Ft. Cable 4 - Rotary Switch w/Custom Cable 5 - Digital Control w/50 Ft. Cable 6 - Digital Control w/75 Ft. Cable 7 - Digital Control w/100 Ft. Cable 8 - Digital Control w/Custom Cable	0 - Standard 1 - Custom	0 - None 1 - I-Beam 2 - Purlin 3 - Solid Beam 4 - Bar Joist 5 - Wood Frame	0 - None 1 - 1 Ft. 2 - 2 Ft. 3 - 3 Ft. 4 - 4 Ft. 5 - 5 Ft. 6 - 6 Ft. 7 - 7 Ft. 8 - 8 Ft. 9 - Custom	0 - None 1 - Included	0 - None 1 - Included

FOLLOW US ON  
SOCIAL MEDIA



CONTACT US  
TODAY!

